

# MONOPRINTING ONTO FABRIC

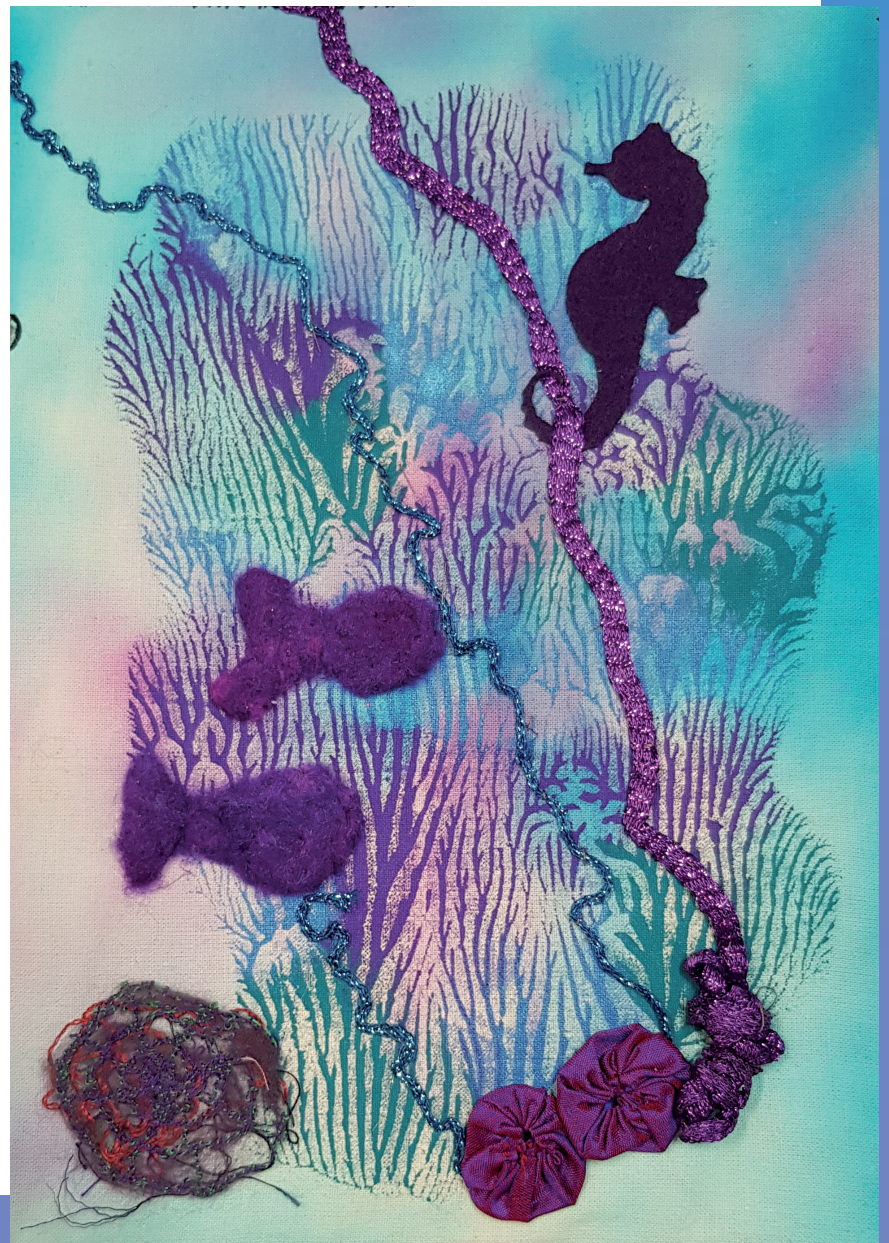
Monoprinting is a simple technique to create an effective background colour to your fabric.

Simply place dabs of Marabu Fabric paint in the centre area of a sheet of acetate .

Place a second sheet of acetate over the top and blend the colours with your finger. Separate the two sheets and place the acetate, design side down onto the fabric. Press evenly on the back with your hand, for good contact between image and fabric.

Carefully lift one side of the acetate and peel off the fabric.

You can print both sides of the acetate and over print for a greater effect. Let dry for 24 hours and then iron to for it colourfastness.



**S&S**

Creativity unlimited™

[www.creativityunlimited.com.au](http://www.creativityunlimited.com.au)